

MT CHAPTER HAPPENINGS



PMI MONTANA CHAPTER

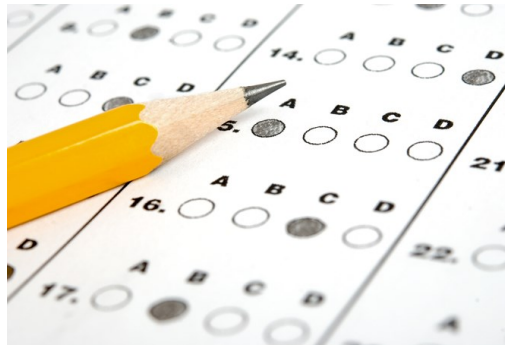
Changes to exams due to Covid-19

There are some changes to exam dates and for the PMP candidate, an extension on the current exam.

For all certification exam candidates who are able to proceed with taking your scheduled exam, please consult test center information to your specific location at [PearsonVUE's Coronavirus Update Page](#) as it is updated regularly.

For candidates who already scheduled the exam but are unable to take it due to health restrictions or delays with training, **PMI will offer you to re-schedule your exam and will automatically extend your exam eligibility until 18 January 2021.**

All paid fees will be eligible for a refund. You can reschedule without accruing penalty fees until 1 July 2020.



For all PMP candidates, **PMI extended access to the current PMP exam until 31 December 2020** and postponed the launch of the new PMP exam until 2 January 2021. Additionally, PMI launched [online proctored testing](#) (OPT) for the PMP so candidates can now take the exam online from the convenience of their home or office.

See [PMI's Covid-19 page](#) for more.

Special points of interest:

- **PDU Tutorial**
- **April Webinars**
- **Central Branch gives back with Helena Food Share**

Project Managers on the Front Lines

How are you and your organization responding to Covid-19? How have you used project management tools and principles to respond to the crisis? Whether you organized a field hospital in less than a week, or scheduled meal delivery for low-income families, or kept your operations going when employees and supplies were scarce, we want to include your stories in the next newsletters to give you a shout-out and to help other PMs look at the tools and principles in a new way. How did you do it, or how are you doing it? Contact Anne Bauer at membership@pmitchapter.org. We want to hear your stories!



Mikki Goodhart, PMP,
Central Branch Lead

“This opportunity allowed all involved to develop new collaborative relationships with other Chapter members, serve the community in a unique way, and further the PM profession overall.”

Helena Food Share (right) adapted quickly and currently provides “Grab and Go” food boxes to maximize safety while still providing food when so many need it.

PMI Volunteers at Helena Food Share

• By Mikki Goodhart
Supporting our Local Community through Guided Process Improvement

In November 2019, our Central Branch started to look for opportunities to enhance internal PM networks and further our footprint in the Helena community. We agreed that a wonderful way to do this was to leverage our collective PM experience by supporting a local non-profit with process improvement through team volunteerism. This opportunity allowed all involved to develop new collaborative relationships with other Chapter members, serve the community in a unique way, and further the PM profession overall.

After discussing possible organizations, we approached Helena Food Share (HFS), the local food bank, whose mission focuses on “serving our neighbors in need by providing food in a respectful and dignified way and by working with others to eliminate hunger in the greater Helena area.”

Our partnership with HFS formally started in February with a kick-off meeting and a volunteer project team consisting of Staci Stolp, Greg Thomas, Anne Bauer, Erin Summers, Rick Pomerhn, and Mikki Goodhart. All these individ-

uals brought knowledge, new perspectives, and a collaboration mindset to the forefront. After analysis, we decided to support two of HFS’s process improvement requests: a customer impact analysis and an inventory tracking tool. Then came a pandemic, an extenuating circumstance that no organization could control.

Once COVID-19 began to sweep across the country, we quickly conferred with HFS and decided to put the customer impact analysis on hold due to the nature of the project. Life for our HFS counterparts and their pantry volunteers was transforming by the hour and by the press release. Troubleshooting became the norm; every day resulted in finding a new way to complete a previously defined process, human and organizational agility was challenged, and staff continued to remain positive while pivoting their operations.

Wanting to continue our support where we could, we continued working through a make-or-buy analysis of software to replace existing methodology, and participated in four vendor demonstrations. Once we finalized the selection criteria, we rated the vendors and identified our best solution.

When the storm dies down, and HFS has a better idea on what their post-pandemic operations might look like, we look forward to picking up on our partnership and hitting the ground running. In the meantime, our volunteer group will remain grateful for the benefits this opportunity has given us and the value it has brought to our individual lives.

Stay well and stay positive!
The world is a beautiful place and we will make it through, together.



President's Message

Hello PMI Montana!

I hope this message finds you well. We are certainly enduring unprecedented times right now and I hope everyone is finding their way through the uncertainty and change.

Your PMI MT Chapter Board is doing our best to help the branches navigate any necessary changes to your local meetings. You have likely noticed that all in-person meetings have been canceled for the foreseeable future, so we feel fortunate that we have the tools already in place to help facilitate virtual learning, sharing and connecting. Each

branch will have the ability to meet again in person when their local COVID-19 guidelines permit it and the Branch Leads feel comfortable doing so. Each community may approach this differently but that's what makes our Chapter-with-Branches model so great; we can be responsive to local needs.

In this newsletter you'll find updates from PMI Headquarters regarding certification exams, resources for earning virtual PDU's, information about our upcoming Board Election, and what your local branches are doing.

I know it's tough to stay connected right now but it's more important than ever that we do. I encourage you to reach out to your friends, colleagues and people in your network to check in. And if you need anything from the Chapter, we are all eager to answer questions and help support our community during this time.

Stay well,

Janna



Janna Tangedahl, PMP,
PMI-Montana President

"I encourage you to reach out to your friends, colleagues and people in your network to check in. And if you need anything from the Chapter, we are all eager to answer questions and help support our community during this time."

Upcoming Elections

By Janna Tangedahl

Did you know? We're holding Board Elections this Fall! Have you ever been interested in sitting on a Board? Or in helping shape what we do here at the MT Chapter? Consider running for a Board position.

For more information please contact Janna at president@pmimtchapter.org.

On the Board we:

- Work together to serve our members
- Meet over lunch twice a month via conference call
- Plan events
- Support our branches
- Promote the profession
- Volunteer what time we have (it's not the same for every Board Member)

You will:

- Earn PDU's
- Attend Regional and National Leadership Conferences
- Build your resume
- Collaborate with PMs across the state
- Have flexibility
- Be able to pursue your interests
- Have support from the entire Board

How to report PDUs



Anne Bauer,
VP Membership

Reporting PDUs to maintain certification is a breeze!

By Anne Bauer

Questions about PDUs come up all the time! Here's a little tutorial to end the mystery.

How do you report PDUs?

Login to the CCR (Continuing Certification Requirement) at <https://ccrs.pmi.org/search> or login to PMI.org and click on MyPMI > Dashboard.

Either way, your next step is to click on PDUs > Report PDUs.

What can I report as a PDU?

PDUs fall into two categories:

Giving Back: these are PDUs you report for working as a PM practitioner, creating useful content, presenting PM information, mentoring or other knowledge-sharing, or volunteering (including volunteering at your branch or chapter).

Education: these PDUs are focused on project management in one of the three skill areas: Technical, Leadership, or Strategic and Business Management.



How many PDUs do I need?

This depends upon your certification. For example, PMP holders need 60 total; in addition, PMPs must earn at least 8 PDUs in the Technical, Leadership, and Strategic and Business Management. The CCR Handbook, located on the CCRS Dashboard under Handbooks and Guides > CCR Handbook, has detailed information about what can be claimed and how much each certification requires.

How can I earn PDUs online?

There are a number of webinars and virtual conferences offered in the next several months which offer PDUs. If you attend a PMI conference, there's a good chance your PDUs will be reported for you!

There's a variety of topics of interest to every project management practitioner here: <https://www.pmi.org/learning/training-development/webinars>.

One hour of webinar = one PDU!

You can also read a book about any aspect of project management and report PDUs for that.

Don't forget that you can earn and report Education PDUs for working in the profession. It's valuable experience!

And you also report attendance at Branch meetings.

PMI makes it pretty easy to claim PDUs and in my experience, the claims get reviewed and approved pretty quickly. It might be time to take a peek and see where you are with PDUs!

It's Not Just You! Covid Staffing Survey

Reprinted from Montana Tech News

L & C Staffing recently published results from their COVID impact survey on Montana employers and workforce. The surveys were taken in early April.

The [employee results](#) indicated unusually elevated distraction levels and anxieties due to overall health and financial concerns. The study compiled results regarding current distractions and stressors and tips to stay focused.

The [employer survey](#) outlines impacts of the virus on businesses. For instance, 29% of respondents have employees performing other than normal job duties, while 30% have seen new business opportunities. It covers common concerns, recovery expectations and timeline, and current impacts on revenue and workforce.

Contact L & C Staffing of Western Montana for more information.

Update from PMI

After numerous discussions, and the continuing disruption of COVID-19, PMI has decided it is prudent to move all scheduled 2020 in-person events to a new series of virtual experiences. The events impacted include:

- Global Conference
- PMO Symposium
- Brightline Strategy@Work
- SeminarsWorld Orlando, Chicago, Boston, Seattle, San Diego

If you are currently registered for one of these events please watch for more information from PMI. PMI is excited to reimagine and reshape these events by adding new aspects and new features for our stakeholders to feel engaged with no matter where they are located.

Virtual Events

Ready to take the next step in your career progression? Want to skill up? Though in-person events have been cancelled, there are great ways to get what you need. PMI partners with SeminarsWorld to offer a number of webinars and events of interest to PMs who want to stay on top of trends and new advances, earn PDUs, and improve their skills.

Some upcoming seminars of interest:

- Business Skill Enhancement
- Communication/Presentation Skills
- Leadership Development
- Project Management/Process Integration
- Strategic Application & Governance (by Discipline)
- Strategic Planning & Implementation

Learn more about [Seminars World](#) by going to [PMI.Org](#).

Advancing Project Management in Montana and Northern Wyoming

Email:
Membership@pmimtchapter.org



VISIT US AT
PMIMTCHAPTER.ORG

Please support our sponsors!

We thank our sponsors, ATG, Blackfoot Communications, and Glacier Bancorp, for their continuing support!

